



NEWSLETTER

Principal: Tracey Bennett
Governing Council Chairperson: Anthony Venning

IN THIS ISSUE:

PRINCIPAL'S WELCOME

WORDS OF WELLBEING

SUMMER CONNECTORS

MATHEMATICS

SCHOOL SPORTS

FRONT OFFICE INFORMATION

HEALTH INFORMATION

SCHOOL CANTEEN

SAFETY IN SCHOOL ZONES

Diary Dates:

February

Monday 14

- All students return to face to face learning

March

Monday 7

- School photos

Monday 14

- Public holiday - Adelaide Cup

Thursday 31

- Sports day

April

Thursday 14 April

- Last day of Term 1 - school finishes at 2:05pm

Traffic Monitors:

Week 2

Morning: Sofia & Rosie

Afternoon: George & Louis

Week 3

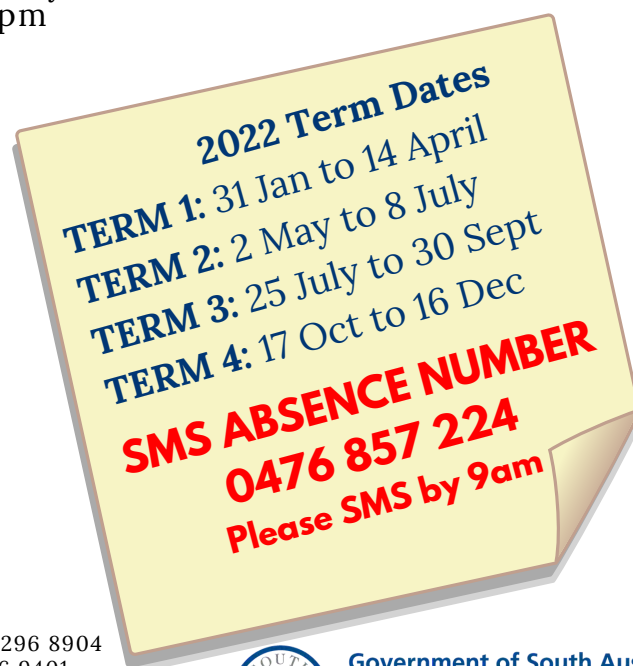
Morning: TBA - Students will be advised

Afternoon: TBA - Students will be advised

School values

Bravery - Care

Challenge - Trust



Principal's Welcome

Tracey Bennett

Dear Families,

Welcome to the start of the 2022 school year! I hope that you have had a wonderful holiday break and are looking forward to the new school year! The start of 2022 has been a little different in our staged return to school. I would like to thank all of our staff for their dedication and commitment in ensuring we had a smooth transition either face to face or remote learning. We are planning to have all year levels back to school, learning face to face on Monday 14 February.

This week we welcomed 38 new receptions and their families to our school as well as 12 children from local, interstate and overseas schools.

I am excited to be given the opportunity of Principal in terms 1 and 2 to continue to support the outstanding work of our PPPS staff. We put the highest priority on the work done by our whole staff team in continuing our school's improvement journey.

The permanent Principal position will be advertised during term 1 and will be starting in term 3 with a tenure of 5 years. There will be a process to backfill my position as Senior Leader for terms 1 and 2 and we will have more information to share with you shortly.

We look forward to commencing 2022 with 17 mainstream classes and one Speech and Language class.



Class teachers

- Speech and Language Class – Vicki Hodgson
- 2x Reception classes – Elise Mack, Chanelle Pomeroy (0.6) and Tracey Bennett replacement(0.4)
- 2x Year 1 classes – Ainsley Haddow; Harinder Kaur
- 2x Year 2 classes – Kirsty Arnold, Sharon Kuchel
- 1x Year 2/3 class – Annette Reid
- 2x Year 3 classes – Victoria Edwards; Charlie Jarman
- 2x Year 4 classes – Ivan Cooper; Clint Durbridge
- 1x Year 4/5 class – Ebony Wilkey
- 2x Year 5 classes – Donna Williams; Eleanor Freeth (0.8) and Kelly Mitchell (0.2)
- 1x Year 5/6 class – Jon Osborne
- 2x Year 6 classes – Georgii Staben; Robert Pearl (0.8) and Michelle Burton (0.2)

Specialist Teachers

- Lena Lloyd (0.4 Learner Support)
- Michelle Burton (0.8 PE)
- Lillie Gepp (0.7 French)
- Steph Hammond (1.0 Performing Arts)
- Kelly Mitchell (0.8 Science)
- Bec Martin (0.2 Aboriginal Education)

Leadership

- Tracey Bennett (Principal Terms 1 & 2), Position to be appointed for Terms 1 & 2 (Senior Leader, sub school r-2 and whole school Literacy)
- Margy Holland (Senior Leader, sub-school 3 - 4 and whole school mathematics)
- Jamie Meredith (Senior Leader, sub-school 5 - 6 and whole school learner engagement and wellbeing)

Principal's Welcome continued...

School Services Officers

Susan Lane (Business Manager)
 Erica Staude (Principal's PA and Administration)
 Linda Chambers (Finance and Administration)
 Emma Neilson (Administration)
 Anne Dingle (Library Officer)
 Annette Stagg (Classroom Support)
 Melanie Milne (Classroom Support)
 Caroline Cobb (Classroom Support)
 Deb McGlennon (Classroom Support)
 Anita Trainor (Speech and Language Class)
 Craig Mudge (IT Systems)
 Chantelle Young (Aboriginal Community Education Officer)
 Nathan Hand (Grounds person)
 Lisa Goodings (Canteen Manager)
 Mary Spence (Pastoral Care Worker)

We are so fortunate to have such highly committed and professional staff across our school and I am confident that your child will have a fabulous year.

Congratulations

We would like to congratulate Charlie Jarman who got married in the school holidays.

Acquaintance night and AGM

As we are unable to have parents onsite at the moment we will not be having our acquaintance night and AGM in the early weeks of this term as initially planned. We will share the new dates once they are confirmed.

Our School Priorities 2022-2024 are documented in our Site Improvement Plan (which will be available on our website soon). As in 2021, our main focus continues to be on increasing student achievement in mathematics. Margy Holland will be leading this improvement area.

In September 2020, the department released a suite of materials to support curriculum implementation in our schools. Our staff have already commenced using these resources to document their yearly planning for 2022 and term 1 overview in their year level teams. Every parent will receive a term overview from their child's class teacher during the first few weeks of each term. Our teachers have already communicated important information to families over the last week.

Parent Code of Conduct and Complaints

The Governing Council approves the Parent and Volunteer Codes of Conduct This outlines the principles of behaviour and respect for all people in our school community and are reflective of our 4 core values of Care, Trust, Challenge and Bravery. I encourage all parents and volunteers to read these documents as they form the basis for our partnership in learning and education in our school community. For a copy of the code of conduct and more information visit our website: [Parent Participation and Volunteering](#)

From time to time parents have concerns which they would like to raise with a teacher in the school. As a staff we are committed to working together to resolve concerns or complaints and should this occur parents are asked to follow the "Raising a complaint with the department" process.

Have you seen our website lately?
 Head to www.paringpkps.sa.edu.au and check it out!
 There's lots of helpful information and keep an eye on the calendar for all upcoming events.



Are you on Facebook? Check out our page for lots of up to date information and handy links
 @paringaparkprimary

Principal's Welcome continued...

It is not always convenient to have a conversation with teachers immediately before or after school and as documented in the process we ask that you make time to talk to the teacher involved to discuss your concerns either in person or over the phone. Putting them in writing in an email or letter is also appropriate. Staff strive to respond to such correspondence between 48 hours of receipt (Mon-Fri) of such communication within the school term. This timeline has been endorsed by the Governing Council.

More information can be found on our website: [Parent Complaints and Grievance Procedures](#) and the Department for Education website: [Raising a complaint with the department](#)

Greenhill Living Garden Program

We are thrilled to continue our collaboration with Rebecca Mumford, who heads up the **Greenhill Living Garden Program**. Rebecca is going to be working with classes on further developing our school garden. Rebecca will be here working in the garden three days a week each term. Once we are able to have volunteers back on site we will welcome parents who would like to help in the garden.

I am privileged to be the Principal for terms 1 and 2 at Paringa Park Primary School which is such a wonderful school with a fabulous and supportive school community. I look forward to the possibilities and opportunities that the year ahead brings for us all.

Words of Wellbeing (WOW)

Jamie Meredith

At the start of the year I am always looking for words of wisdom from others with more insight and experience than me to act as a rudder for the year ahead- to give me some direction, an anchor of sorts. I came across this parenting quote from Bruce Lee and reflected on my own parenting style over the Christmas break where material things can be a blinding focus and an expectation of our kids- let's face it, the world is set up for us to be consumers! I wanted to include this and see if you can reflect:

How much do you put into teaching your kids about things your parents never had the time to show you?

Over my holiday break I showed my 14 y.o. how to use a garden line trimmer. My dad never trusted me, his lawn was too sacred. I showed him how to mop a floor, my mum never trusted me to do a good job as a teenager. And I showed my son how to cook his first steak and prepare a sauce, for my mum, men didn't belong in the kitchen!

As we all return back to school into the 3rd year of Covid in our society, it will be another year where we will all need to be flexible and where we may be spending more time with our kids than we thought- so with this precious time, what are we teaching them? By doing this and taking that extra bit of time and patience, we are growing the relationships and connections with our kids much more rapidly than watching Netflix or playing Fortnite!

Do you have payments due?

Preferred payment method is via Qkr!
Please contact the front office for other payment options and for any payment queries.

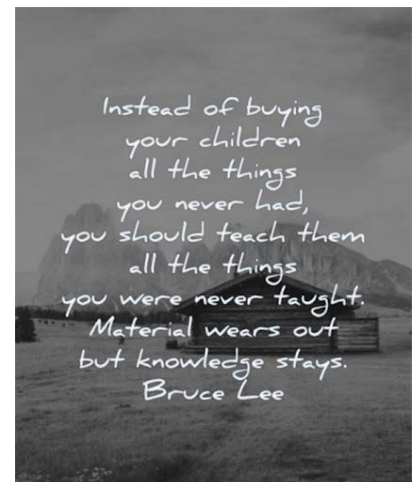
All school payments are payable by 3pm of the due date.



Late payments will not be accepted.

Upcoming payments:

- Materials & Services charges



Mathematics

Margy Holland

Welcome back! I am sure every family enjoyed using maths in some form over the holidays. We are continuing with our maths journey this year, in line with the school Site Improvement Plan, looking at ways to improve how we teach and inspire our children to love maths.

On Tuesday, our staff watched a webinar from the Australian Mathematics Teachers Online Conference looking at best ways to use high quality maths resources to inform our maths planning and teaching. It was reaffirming with the resources we have and also led to some interesting discussions and common understandings of different approaches.

If you're looking for a great website for maths games then checkout the link from Michael Minas. Here you will find a range of games you can play with just a deck of cards or some dice. Each game has a short video clip showing how the game works and good questions to ask while playing. [Love Maths](#)
Let me know what you think if you use this link.

Viva la maths revolution.



Summer Connectors

Jamie Meredith

What is going on in Adelaide that can build family ties in this great weather? Over the course of the year I will post great things for families to do to connect. I won't put all the details but enough for you to google it and get something started.

Bowden Bike Kitchen

Want to learn how to repair or service your bike? No tools needed, they have them all! It is a community run project where you turn up with a bike and an attitude of learning and experienced community people will help and teach you- best for older students.

O'Halloran Hill Reservoir

The reservoir opened up in late December and is perfect for family bike rides, walks or a picnic as they have BBQ facilities. So many kangaroos! Kayaking is amazing and they sometimes have hire options available on weekends.

Myponga Reservoir

With a great family restaurant by the reservoir and so many great tracks through beautiful forests, this is a good one for bikes and trail walking. Lots of bird life at Myponga.

Upcoming family Fringe Shows

Basketball Man, Clean Comedy Hour, 360 Allstars, The Greatest Magic Show, CSI kids and the science comedy show "You are a doughnut". There is so much fun stuff happening at the Fringe and it is a great chance for everyone in the family to be involved. Book something and make it a priority.

Silver Sands Beach

This drive on beach at Aldinga is outstanding, it allows you to set up for the day with shelters and the seas are often flat and perfect for younger swimmers, yet fun for teenagers wanting to play cricket, footy, volleyball or skim rocks. Yes, it takes some organising to get there but it is a day where memories and moments are created.

Kuipto Forest

Take the dog for a trail walk through calm and quiet woodlands that are right on our door step. So many things to see, like animal and birdlife (if you are quiet) and perfect places for picnics and the dog gets to enjoy it with you all as well.

North Adelaide Par 3 Friday Night Golf

On Friday nights this beautiful little course in the centre of the city has DJs and competitions for the whole family - even a hole in one competition that jackpots. They are putting fun back into golf and the holes are short and a nice walk for families.



School Sports

Out of school sports registration changes - Important information

We are very fortunate to be able to offer a range of out of school hours sports to our students. This year, we are introducing a new online registration process. If your child would like to participate, you must register through our [online portal](#) only which can also be found on our school website under the Parent Information Tab at the top of the screen. Fill out your child's details (you can tick multiple sports for one child) and it will go to the Coordinator's email. You will need to repeat this process for each child. Please note: Paper registrations will NOT be accepted.

We have added information about each sport to give parents an idea of the commitment. Please ensure you read this and understand it. All questions regarding sports should be directed to the respective coordinator via their email which is available on the website.

All of our out of school hours sports are run by volunteers and cannot go ahead without parent support. We strongly encourage you to consider helping in some capacity.

At this stage all Out of School Sports will be due to start in week 5 of the term due to Covid-19.

Front Office Information

Our friendly front office staff are able to assist you with any queries between 8:30am – 3:30pm.

Account payments

For payment of accounts our preferred method is Qkr, or alternative options include cash sent with your child, BPoint (via our website), telephone payment or over the counter payments Monday to Friday from 8.30am to 9.30am (we are unable to accept in-person payments outside of these times). A reminder that payments for all excursions and events close at 3pm of the due date. We aim to give families as long a timeframe in which to pay as possible, but due to administrative requirements we strictly adhere to the cut off times and dates. No late payments will be accepted.

If payment of any accounts or events causes financial difficulty for your family, please contact our finance officer.

Qkr!

We encourage families to make use of the Qkr! app to pay for most invoices and excursions, as well as ordering uniforms and canteen lunches. Please remember, Qkr! is not personalised.

Qkr! continued

This means that anything available for payment across the school is visible to all users and items will not disappear once paid. Please only pay for items relevant to your child and only pay once per item. If you are unsure if you have paid, you can check in the "activity" menu or contact the front office.

Have you updated your child's class information in Qkr yet? It is crucial that this is done at the start of each year. Please ensure you have done this before making any payments in 2021.

School card

For those families who may be eligible for school card assistance, a reminder that all applications can now be completed online via [School Card scheme](#). Please see the website for more information or contact the front office for assistance.

Uniform shop

The uniform shop operates via Qkr! only. Uniforms purchased via Qkr! by 5pm will be delivered to your child the following day. We are happy to exchange sizes provided all tags remain attached to the garments. If you do not use Qkr!, please contact the front office for alternative purchasing methods.

Health Information

Nut awareness

Paringa Park Primary is a nut aware school. We acknowledge that due to food processing practices, it is impractical to eliminate nuts and nut products entirely. The emphasis is therefore on raising awareness and adopting the reasonable procedures termed as “Nut Awareness”.

Staff will discuss nut awareness with children and will inform parents if there is a child in their class with a known allergy. In any case, families are requested to send food to school that does not contain any type of nut or nut based product. Children who bring food containing nuts will be required to eat the food away from other children.

We appreciate your cooperation in providing a safe school environment for all members of our community.

Medications and care plans

As much as possible, we encourage children to take medication outside of school hours, eg medication required three times per day can be taken in the morning (before school), afternoon (after school) and evening. If medication needs to be taken at school, it must be kept securely in the front office and will only be administered by front office staff. The only exception to this is ventolin puffers which are to be kept in the classroom or the child’s bag and can be administered under teacher supervision. Children should not bring any other medications to school, including over the counter pain relief (eg paracetamol) or cold and flu products.

Please check the expiry dates on any medications that need to be held at school (including Epipens & asthma reliever medication) as out of date medications will not be administered to children. It is a requirement that all medications (including puffers) are in the original packaging with pharmacy label including the child’s name and dosage. All medications at school must have a medication authority or care plan from a doctor, and a reminder that all children with asthma (even if only mild or occasional) need an asthma care plan. Please ensure that all care plans are up to date and provide a copy to the front office.

If your child’s health support needs change in any way during the year it is important that you communicate this to the front office in a timely manner. Front office staff are always available to discuss your child’s health care needs at school.

For more information visit: [Medication management in education and care services](#)

Canteen



The canteen will be open next week for lunch orders only. Orders are made using Qkr!

We will let families know when we will reopen for students to buy snacks and ice creams during recess and lunch time.





IMPORTANT REMINDER: SAFETY IN AND AROUND SCHOOL ZONES

Student safety

For safety reasons, the staff/visitor car park is OUT OF BOUNDS. We ask that parents do not use the carpark as a thoroughfare when walking your children to and from school. There are pedestrian gates on Bowker Street near the crossing and on Margaret Avenue. Please note the car park is reserved for staff and visitors only and is **not to be used by families** when dropping off or collecting children.

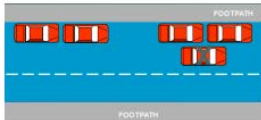
We would also like to remind families that the streets surrounding our school do have a 25km/h limit when children are present. Please be aware of children walking and riding near the school and be mindful of no parking zones. Police and the Holdfast Bay Council conduct regular patrols around all schools. Please find below further information from Holdfast Bay Council in relation to school students and traffic. Please help keep our children safe.

DOUBLE PARKING

A driver commits an offence by stopping a vehicle on a road when another vehicle is parked between the driver's vehicle and the kerb.

NOT PARALLEL PARKED

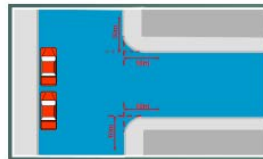
A driver commits an offence by stopping a vehicle on a road when the left hand wheels of the vehicle are not as near as practical to the kerb (no more than 300mm from the kerb)



**Don't just think of the safety of your child.
Remember other parents' children use the road too!**

10 METRE RULE

A driver must not stop within 10 metres from the nearest point of an intersecting road at an intersection / T-Intersection without traffic lights.



holdfast.sa.gov.au
Brighton Civic Centre
24 Jetty Road, Brighton SA 5048
PO Box 19, Brighton SA 5048
P 08 8229 9999
F 08 8298 4561
E mail@holdfast.sa.gov.au

SCHOOLS, STUDENTS AND TRAFFIC

PARKING RESTRICTIONS AT SCHOOLS ARE FOR THE SAFETY OF ALL CHILDREN

The Australian Road Rules provide a variety of parking restrictions at and near schools to achieve a safer environment for all children. These restrictions are designed to optimise traffic safety and movement.



NO STOPPING ZONE

This zone is usually located adjacent to school entrances. This is to ensure that a clear view of the road and footpath is maintained for pedestrians and drivers.



CONTINUOUS YELLOW EDGE LINE

A continuous yellow edge line has the same requirements as a no stopping sign.



NO PARKING ZONE

Drivers are allowed to stop in this zone for a maximum of **two (2) minutes from the time of stopping** to pick up or drop off passengers.

If the passenger is not at the kerb the driver must vacate the zone immediately.



BICYCLE LANES

Drivers are committing an offence if their vehicle becomes stationary, even though the motor is running and the drivers remains seated in the vehicle or waiting in a queue to use a legal parking zone.

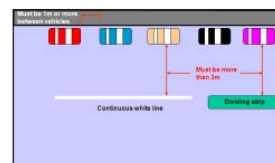


QUEUING TO PARK

Drivers are committing an offence if their vehicle becomes stationary even though the motor is running and the driver remains seated in the vehicle or waiting in a queue to use a legal parking zone.

WHITE CENTRE LINE

A vehicle must not stop or park at anytime alongside a white centre line.



WARNING: It is not a defence if you stop in these zones to answer a mobile phone, queuing to park or dropping off or picking up passengers